

# Universe



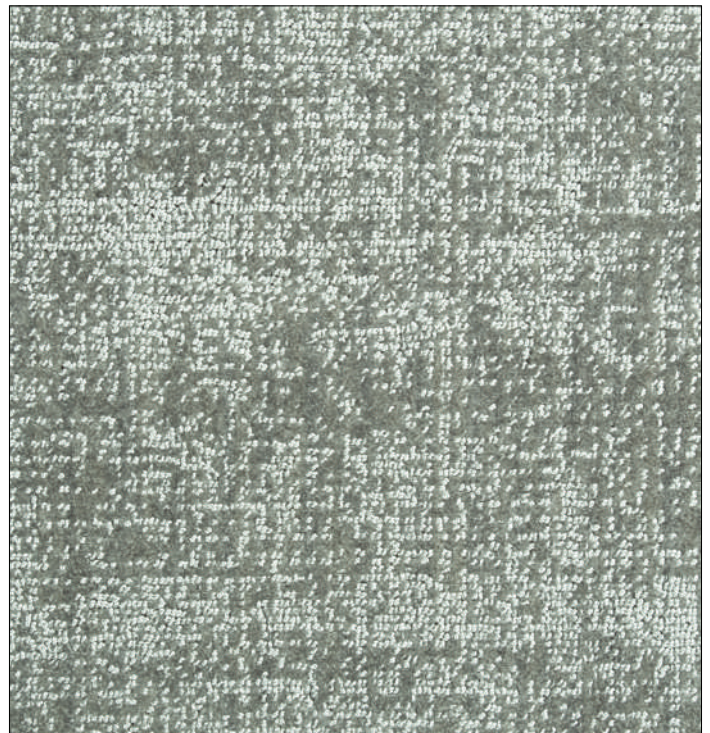
DESIGNED IN THE  
NETHERLANDS

# Universe

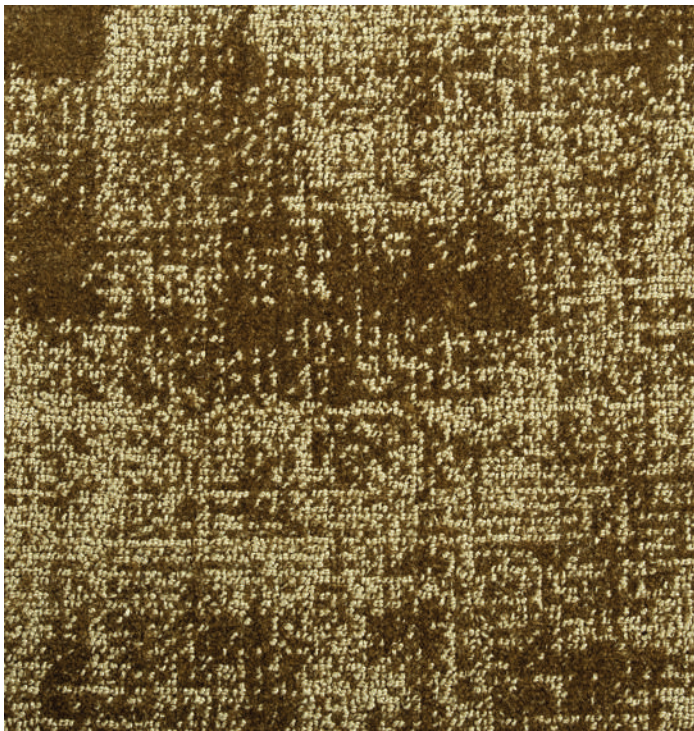
**SURFACE**  
**SOLUTIONS**



Opal 002



Silver 225



Gold 013



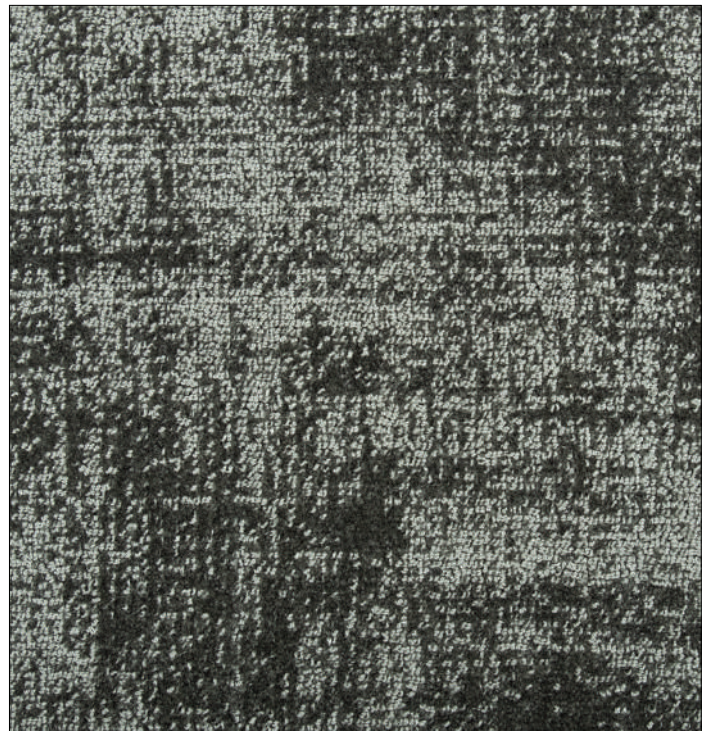
Marble 686

# Universe

**SURFACE**  
SOLUTIONS

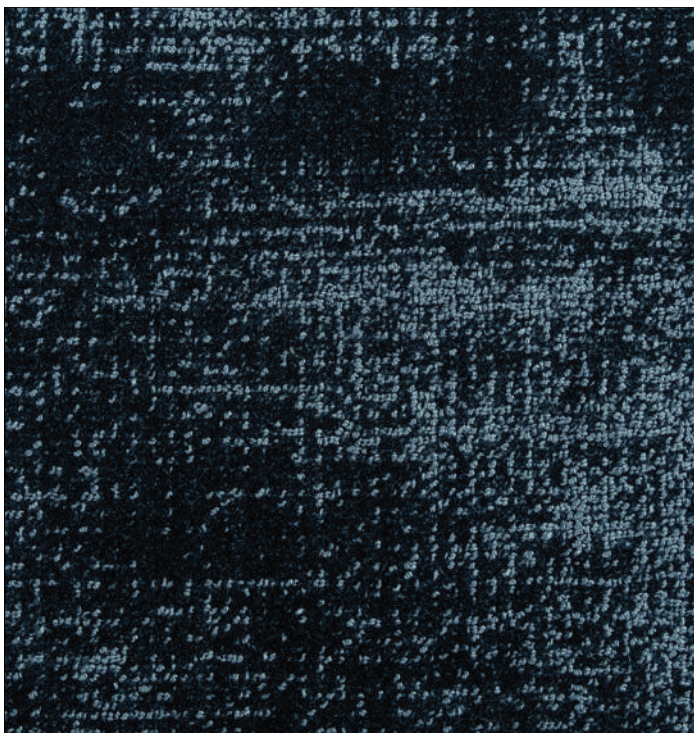


Platinum 007

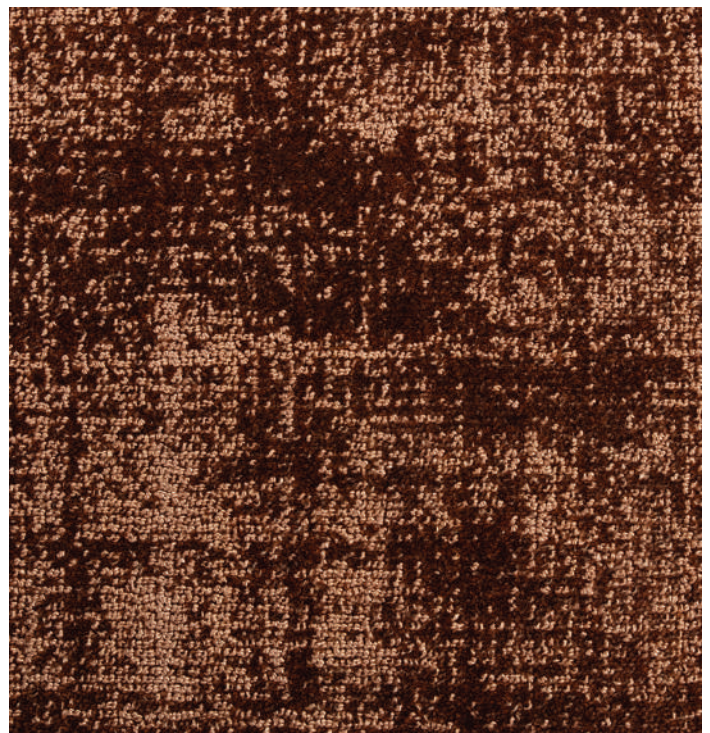


Graphite 999

# Universe



Cobalt 809



Garnet 001



DESIGNED IN THE  
NETHERLANDS



Construction	: Hand Woven Random Cut / Loop
Pile Material	: 100% Nylon 6.0
Secondary Backing	: Cotton Cloth
Pile Weight	: ca. 2.40 kg / sq mtr +/- 7.5%
Total Weight	: ca. 3.60 kg / sq mtr +/- 7.5%
Pile Height	: ca. 7 mm +/- 7.5%
Total Height	: ca. 10 mm +/- 7.5%
Usage Classification EN 1307:2014	: Heavy Domestic / General Commercial
Comfort rating EN 1307: 2014	: LC 5
Static Electricity Charge	: Antistatic
Colour Fastness to Light ISO 105 B02:2013	: 5
Rubbing Fastness - Dry ISO 105-X12:2016	: 5
Rubbing Fastness - Wet ISO 105-X12:2016	: 5
Colour Fastness to Water ISO 105-E01:2013	: 5
TOG Rating	: 1.14
Burn behaviour BS EN 13501-1:2007	: Cfl-S1
Stair suitability	: Yes
Widths	: 4 mtr +/- 1%
Cut length service	: Yes
Standard rug sizes	: No
Bespoke rug service	: Yes